

Die „Exekutive“: Fachexperten

Prof. Dr. Med. Marco Stein
Neuroonkologisches Zentrum
Klinik für Neurochirurgie
Universitätsklinikum Gießen und Marburg GmbH, Standort Gießen

Reflexion

Was leistet das Zentrum für die Zertifizierung? Was ist der Benefit?

- Auseinandersetzung mit der eigenen Versorgungsqualität
- Optimierung von internen Prozessen
- Schulung von Mitarbeitern
- Entwicklung von SOPs
- Gewährleistung der Personalanforderungen

WiZen-Projekt

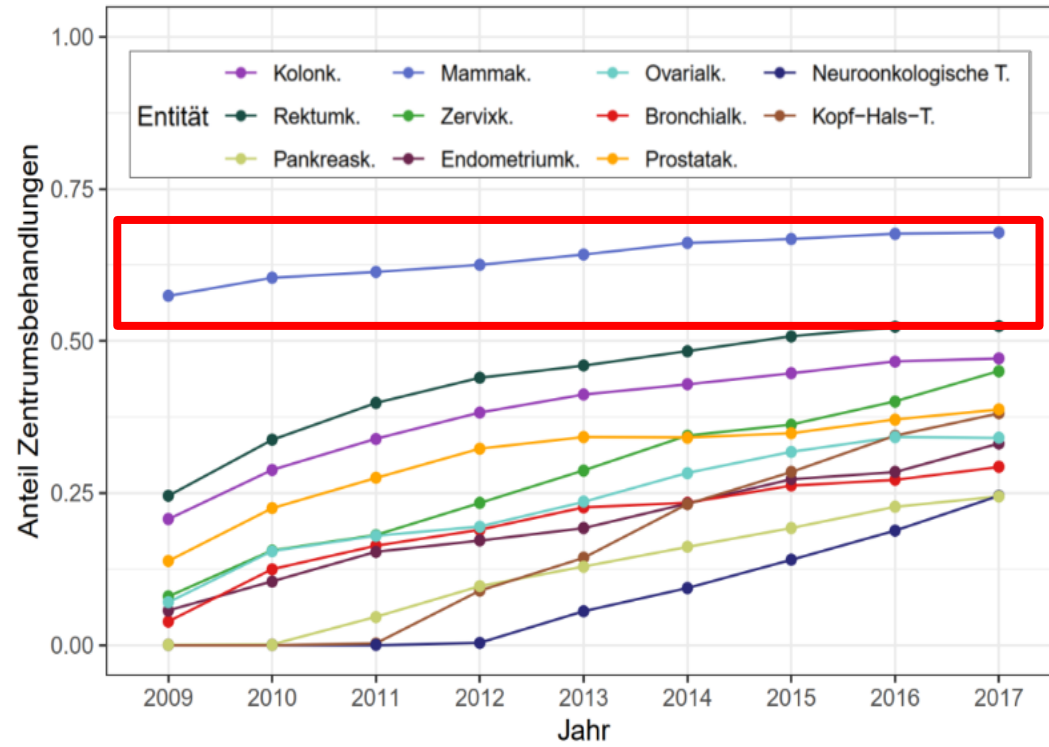
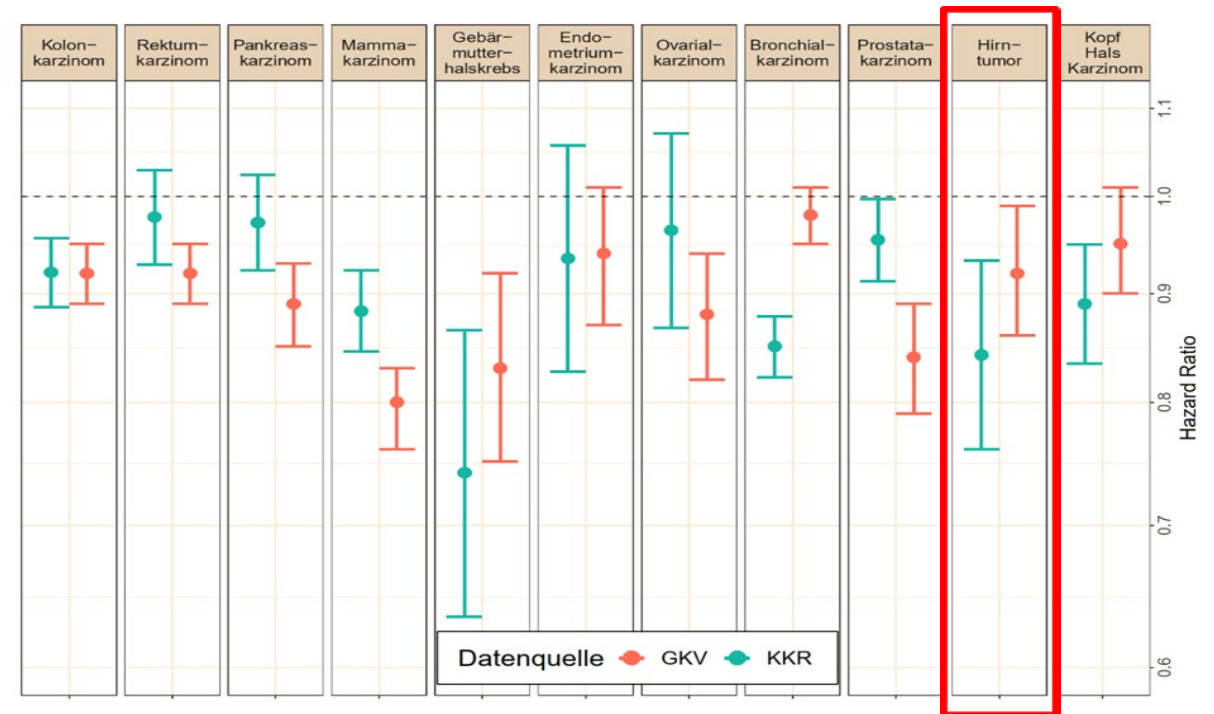


Abbildung 2: Anteil zentrumsbehandelter Patient:innen nach Entität im Zeitverlauf, GKV-Daten



Überleben und Zertifizierung

Wirksamkeit der Versorgung in onkologischen Zentren (WiZen) - Erkenntnisse zur Ergebnisqualität und Erfolg des Datenlinkage

Prof. Dr. J. Schmitt¹, Dr. O. Schoffer¹, Prof. Dr. M. Klinkhammer-Schalke^{2,3}
 C. Bobeth¹, Dr. M. Roesler¹, Dr. V. Bierbaum¹, Dr. M. Gerken², K. Kleihues van Tol³, P. Dröge⁴, C. Günster¹

1) ZEGV, 2) TZR, 3) ADT, 4) WiAo

Patient-Centered Assessment in Surgical Neuro-Oncology

Assessment Practice of Patient-Centered Outcomes in Surgical Neuro-Oncology: Survey-Based Recommendations for Clinical Routine

Carolin Weiss Lucas^{1†}, Mirjam Renovanz^{2,3†}, Johanna Jost⁴, Michael Sabel⁵, Dorothee Wiewrodt^{4†} and Marion Rapp^{5†}



ORIGINAL RESEARCH
published: 11 August 2021
doi: 10.3389/fonc.2021.702017

- 72 Kliniken
- 42% (n=30) Universitätskliniken
- 51% (n=37) assoziierte Lehrkrankenhäuser
- 7% (n= 5) lokale Krankenhäuser

TABLE 1 | Squared table of department affiliation to CNOC versus UH.

Status	CNOC	No CNOC
University hospital	24	6
No university hospital	11	31

The chi-squared test shows a significant relationship between CNOC and UH status ($p < 0.0001$).

CNOC = Certified neurooncological centers

Patient-Centered Assessment in Surgical Neuro-Oncology

TABLE 2 | Caseload and health care structure.

	Percentage					Statistical significance of stratifying factors	
	Overall	CNOC		No CNOC		Factor CNOC (controlled for factor UH)	Factor UH (controlled for factor CNOC)
		UH (n=24)	No UH (n=6)	UH (n=11)	No UH (n=31)		
Primary brain tumor consultations per year*							
<100	26%	4%	30%	0%	52%	r=0.04; p=0.72	r=0.55; p<0.0001
100-199	39%	38%	60%	33%	38%		
200-299	17%	25%	10%	33%	10%		
≥300	14%	33%	0%	33%	0%		
[Reply rate]	[96%]	[100%]	[91%]	[100%]	[94%]		
Health Care Structure**							
Psycho-oncology	90%	100%	100%	100%	77%	X ² =1.63; p=.20; cOR=na	X ² =0.55; p=.46; cOR=na
[Reply rate]	[99%]	[100%]	[100%]	[100%]	[97%]		
Palliative Care						X ² =0.01; p=.92; cOR=1.3 [0.02;79.0]	X ² =0.04; p=.84; cOR=0.6 [0.01;36.6]
Inpatient	97%	96%	100%	100%	96%		
[Reply rate]	[94%]	[100%]	[91%]	[100%]	[90%]		
Outpatient	57%	71%	60%	67%	43%	X ² =0.32; p=.57; cOR=1.7 [0.5;5.3]	X ² =0.73; p=.39; cOR=2.0 [0.5;5.3]
[Reply rate]	[94%]	[100%]	[91%]	[100%]	[90%]		
Neuropsychology	75%	92%	80%	100%	55%	X ² =0.48; p=.49 cOR=2.29 [0.51;10.21]	X ² =2.79; p=.095; cOR=6.81 [1.02;45.59]
[Reply rate]	[94%]	[100%]	[91%]	[100%]	[94%]		

Significant differences regarding health care structures are highlighted (statistical trends in light blue). Statistical tests: *partial Pearson correlations; **Cochrane Mantel-Haenszel test. Percentages are also provided by subgroups, i.e., UHs (as opposed to non-university institutions) and CNOCs. Overall percentages [reply rates] are highlighted in bold.

CNOC = Certified neurooncological centers

UH = University hospital

Patient-Centered Assessment in Surgical Neuro-Oncology

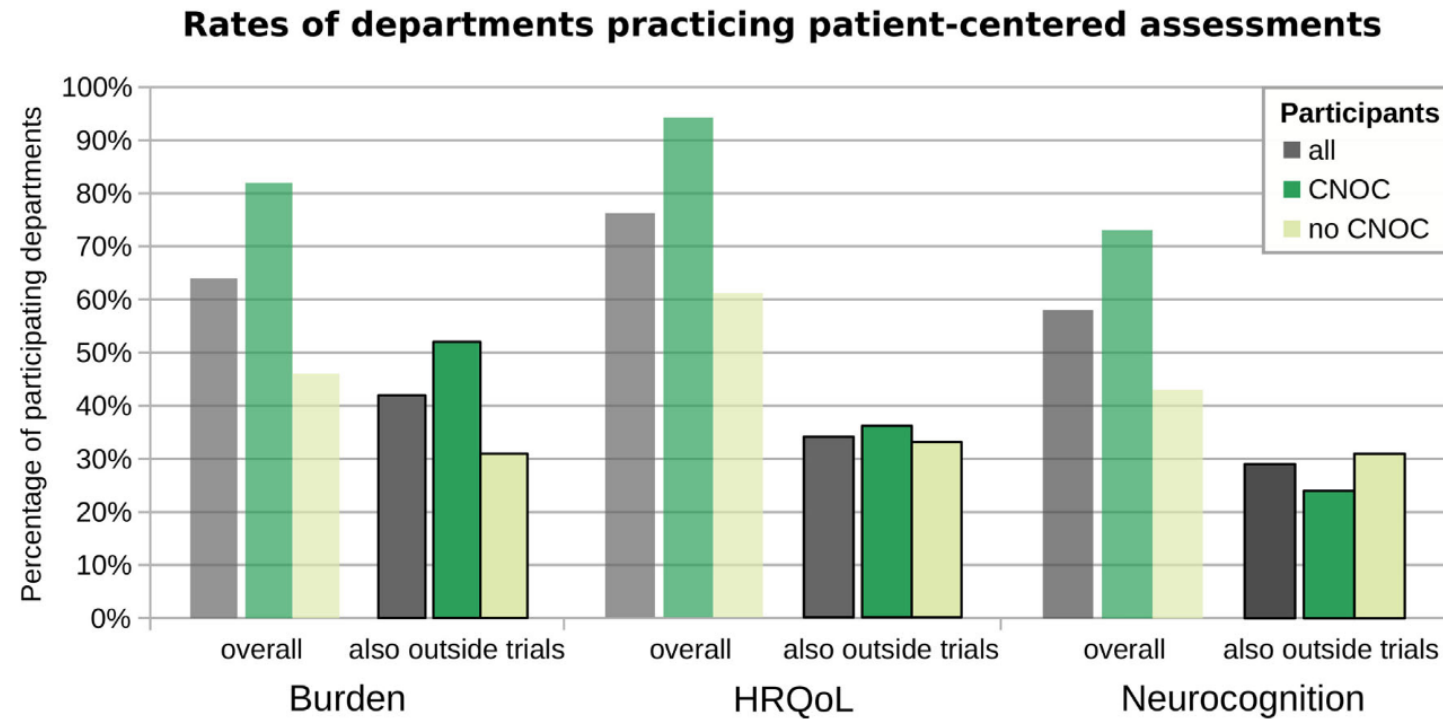


FIGURE 2 | Assessment practice overall *versus* not exclusive to clinical trials. The y-axis represents the percentages of departments performing the respective assessment types, across all participating departments (grey) and grouped by CNOC (green) *versus* no CNOC (light green) status. Burden: psycho-oncological burden, depression, and anxiety.

CNOC = Certified neurooncological centers

Patient-Centered Assessment in Surgical Neuro-Oncology

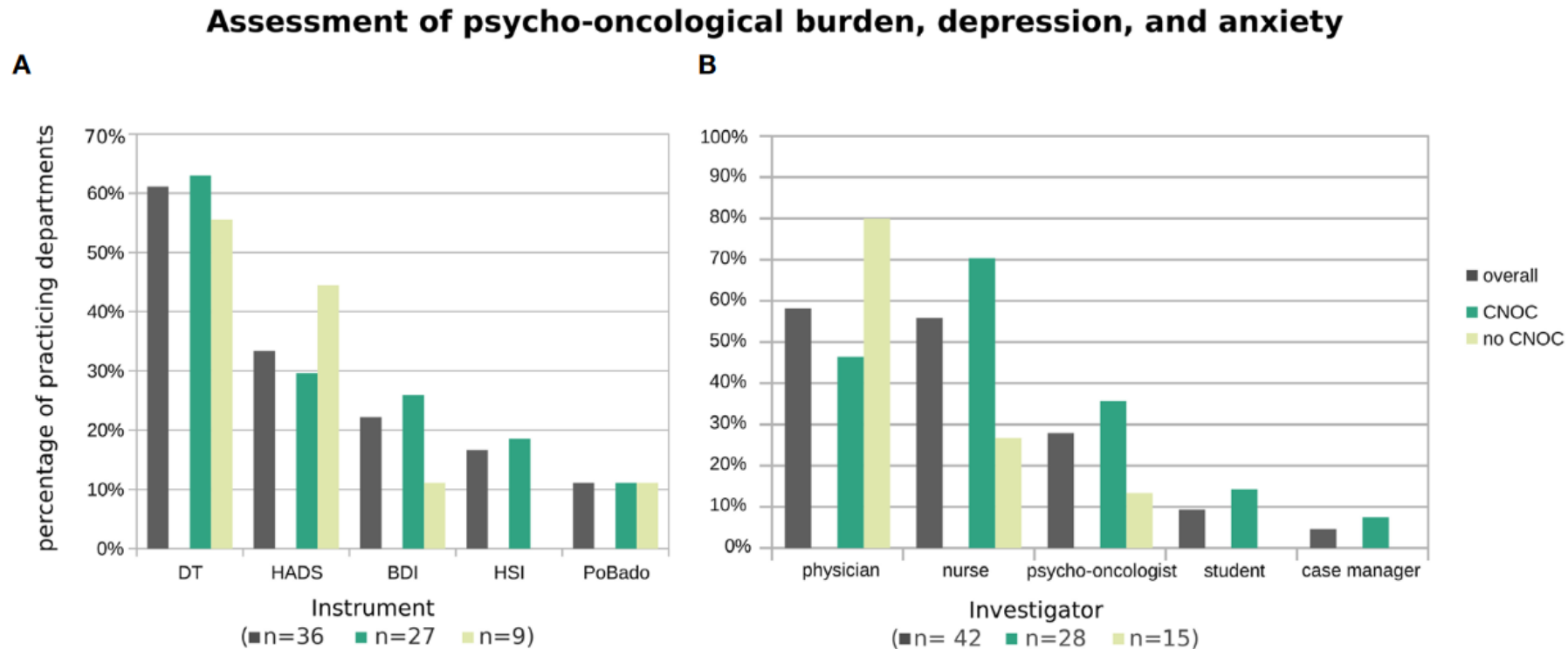


FIGURE 3 | Applied psycho-oncological assessment instruments **(A)** and administering professionals **(B)**, overall and stratified by certification type of participating departments. Histograms are based on replies from *n* departments practicing assessment of psycho-oncological burden, depression, and anxiety (with *n* provided by subgroup in the x-axis label). Multiple instruments (or multiple types of professionals) were named by 39% (29%) of departments.

CNOc = Certified neurooncological centers

Was lernt man als Fachexperte?

- Umsetzung der Anforderungen des Erhebungsbogens abhängig von lokalen Strukturen
- Individuelle Lösungsansätze zur Problembehandlung
- Konzepte zur interdisziplinären stationären Behandlung
- Möglichkeiten zur ambulanten Weiterbetreuung onkologischer Patienten
- Möglichkeiten der externen Kooperation
- Studiennetzwerke

Kann Zertifizierung auch Spaß machen?

- Gewährleistung der Sichtbarkeit von vielen Berufsgruppen
- Die hohe Motivation der Beteiligten Mitarbeiter
- Sichtbare Weiterentwicklungen des Zentrums
- Zunehmende Optimierung von Abläufen
- Das Zusammenwachsen verschiedener Kliniken zu einem (neuro)onkologischen Zentrum
- Wertschätzung der Mitarbeiter